






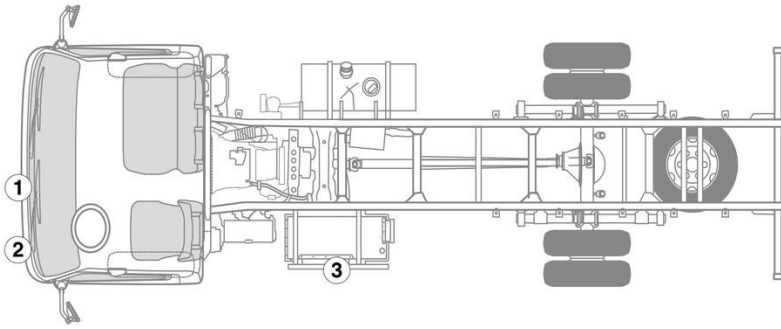


- |  |                            |   |                               |   |                                 |   |                                   |   |                  |
|--|----------------------------|---|-------------------------------|---|---------------------------------|---|-----------------------------------|---|------------------|
|  | Gaisa spilvens             |  | Drošības jostas nospriegotājs |  | Degvielas tvertne               |  | Noturēšanas sistēmu vadības bloks |  | 12 V akumulators |
|  | Augstsprieguma akumulators |  | Augstvoltāžas sastāvdaļas     |  | Augstvoltāžas atslēšanas ierīce |   |                                   |   |                  |

Norāde: Papildu informāciju, lūdzu, skatiet mūsu [glābšanas dienestu vadlīnijās](#).



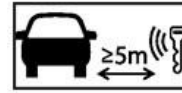
### 1. Identifikācija / apzīmējums



### 3. Tiešu bīstamību novēršana / drošības noteikumi

#### Aizdedzes izslēgšana:

1. To switch off the ignition, turn the ignition key to the ACC position (A)
2. Turn the ignition key further to the LOCK position (B) and remove it.



#### Augstsprieguma sistēmas deaktivizācija

Pārējos gadījumos augstsprieguma sistēma jādeaktivizē šādi:

#### Iespēja 1: Augstsprieguma izslēgšanas ierīce



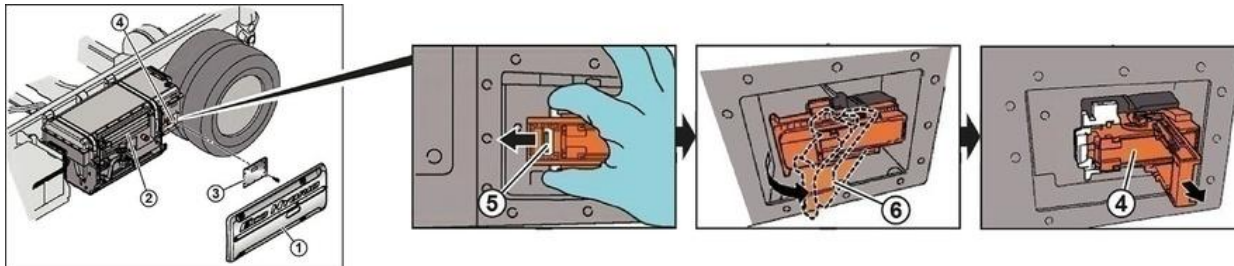
The EMERGENCY OFF button is located in the cutout in the side panel of the high-voltage battery.

- Press the EMERGENCY OFF button



## Iespēja 2: Alternatīva augstsprieguma izslēgšanas ierīce

The high-voltage disconnect device (safety plug) is located on the right-hand side of the high-voltage battery.



- Unscrew the 6 bolts (M8) and remove the side panel (1).
- Unscrew the 12 bolts (M6) and remove the cover (3) of the safety plug (4).
- Push the retainer (5) of the locking lever (6) to the left (arrow).
- Flip the locking lever (6) outwards.
- Pull the safety plug (4) out of the holder; it is now certain that the high-voltage circuit in the battery is interrupted.
- Reattach the cover (3) with 4 bolts in order to prevent the high-voltage system from being switched back on.



### Danger from electrical voltage

If you commence rescue work before waiting for the capacitor to discharge, there is a danger of electric shock which could result in severe or fatal injuries. Before starting any rescue operations, wait for at least five minutes after switching off the high-voltage system in order to discharge the capacitor in the voltage converter.



Gaidiet aptuveni 20 sekundes, lai pārlicinātos, ka augstsprieguma tīklā nav saglabājies atlikušais spriegums.



Pasīvo drošības sistēmu – gaisa spilvenu un drošības jostas nosprīgotāju barošana tiek turpināta ar 12 voltu borta elektrotīklu.



### 12 V akumulatora atvienošana

1. Noņemiet 12 voltu akumulatora pārsegu.
2. Atskrūvējiet 12 voltu akumulatora mīnusa kabeļa skrūvsavienojumu un nodrošiniet pret nevēlamu kontaktu.