
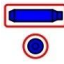







① Battery 12 V

② High-voltage battery

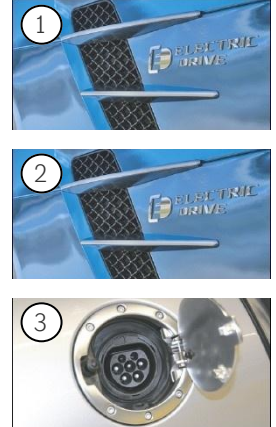
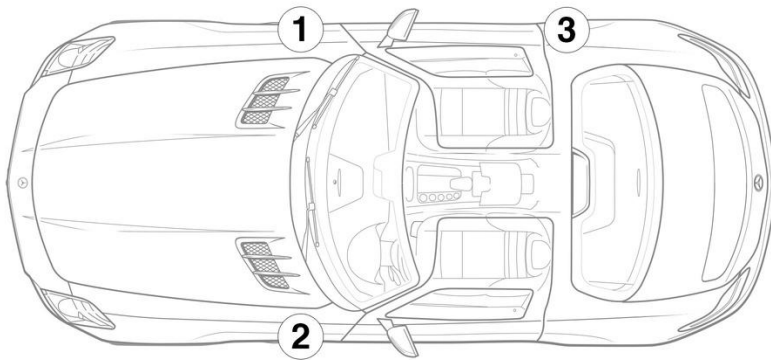
③ High-voltage disconnect device

- |  |   |  |  |  |
|--|---|--|--|--|
|  Airbag                          |  Gas generator |  Seat belt tensioner  |  Gas-filled strut        |  Body reinforcement             |
|  Restraint systems control unit |  12 V Battery  |  High-voltage battery |  High-voltage components |  High-voltage disconnect device |

Note: Please see our [emergency response guide](#) for more information



## 1. Identification / recognition



## 3. Disable direct hazards / safety regulations

## Deactivation of the high-voltage system

In all other cases, the high-voltage system should be deactivated as follows:

## Option 1: High-voltage disconnect



The high-voltage disconnect device is located under the lid of the fuse and relay box on the rear panel in the boot.



Open lid (1) / Pull out switch (2) on fuse and relay box (3)



In order to ensure that there is no longer any residual voltage in the high-voltage system, wait approx. 20 seconds after switching it off.



The passive safety systems such as airbags and seat belt pretensioners will continue to be supplied with power by the 12-volt electrical system.



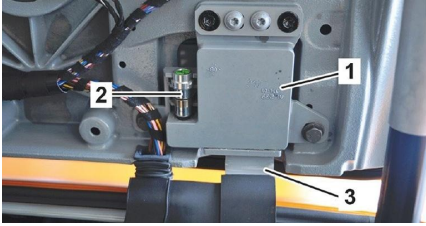
## Disconnecting the 12 V battery



1. Remove the cover from the 12-volt battery in the engine compartment.
2. Disconnect the negative cable of the 12-volt battery at the screw connection and secure it against unintentional contact.



#### 4. Access to the occupants



The SLS AMG is equipped with a safety system which uncouples the door hinges from the hinge arms when the vehicle comes to rest lying on its roof after an accident. Each door hinge (1) contains a pyrotechnic initiator (2) which is triggered by the restraint systems control unit. When the door lock is opened, the doors can be pulled off the hinge arms (3).