

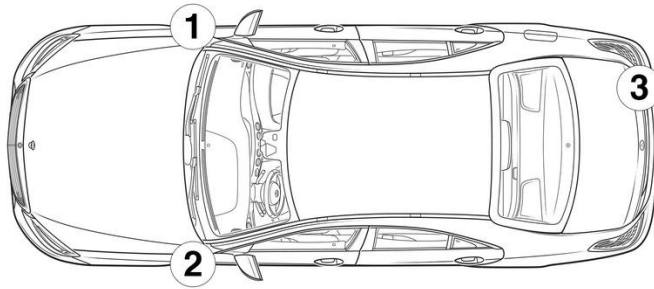
- ① On-board electrical system battery
- ② Additional battery
- ③ High-voltage battery
- ④ High-voltage disconnect device
- ⑤ Alternative high-voltage disconnect device, left-hand drive
- ⑥ Alternative high-voltage disconnect device, right-hand drive

Airbag	Gas generator	Seat belt tensioner	Gas-filled strut	Fuel tank
Restraint systems control unit	12 V Battery	High-voltage battery	High-voltage components	High-voltage disconnect device
Alternative high-voltage disconnect device	Pedestrian protection	Beltbag		

Note: Please see our [emergency response guide](#) for more information



1. Identification / recognition

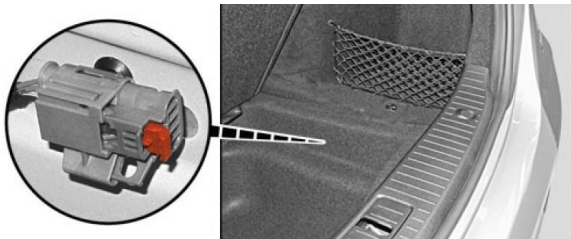


3. Disable direct hazards / safety regulations

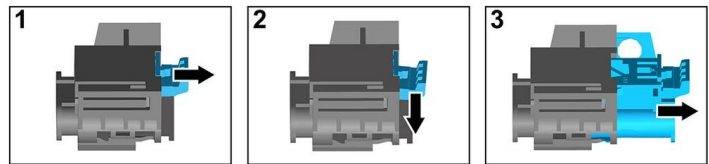
Deactivation of the high-voltage system

In all other cases, the high-voltage system should be deactivated as follows:

Option 1: High-voltage disconnect



The high-voltage disconnect device is located on the right at the rear under the cover of the trunk recess. The recess lining is pulled out of the trunk by the tab below the trunk sill in the center of the vehicle.

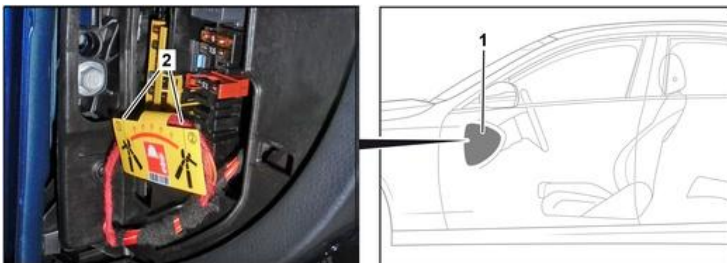


- (1) Pull the release
- (2) Push the release down
- (3) Pull out the switch



Option 2: Alternative high-voltage disconnect

The alternative high-voltage disconnect is located under the cover of the fuse box in the cockpit on the driver's side. It is indicated with a sign.



Remove the cover (1). Cut the cable at the marked point (2).



Disconnecting the 12 V battery

- 1. Remove the cover from the 12-volt battery.
- 2. Disconnect the negative cable of the 12-volt battery at the screw connection and secure it against unintentional contact.

