

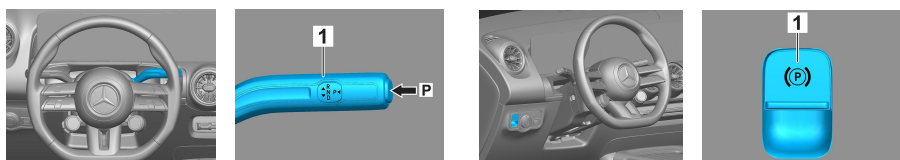
Note: Please see our [emergency response guide](#) for more information

## 1. Identification / recognition

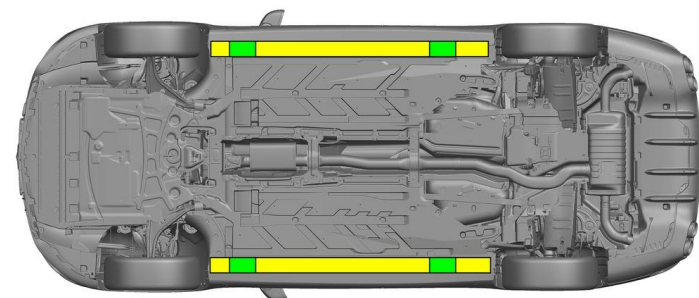




## 2. Immobilisation / stabilisation / lifting

### Parking brake



Press the P switch on the gear selector (1). The parking brake is automatically activated.



-  Suitable lifting points
-  Suitable stabilisation points on the side

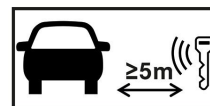


Additional deformation of the door sills and the underbody (e.g. through support with hydraulic equipment) must be avoided during the rescue.

## 3. Disable direct hazards / safety regulations

### Switch off the ignition:

1. Press the START/STOP button without actuating the service brake.
2. Keep the electronic vehicle key at a distance of at least 5 m.



The absence of engine noise does not mean that the vehicle is switched off.



A restart is possible until the vehicle is switched off.



### Disconnecting the 12 V battery

1. Remove the cover from the 12-volt battery.
2. Disconnect the negative cable of the 12-volt battery at the screw connection and secure it against unintentional contact.



### Disconnecting the 48 V battery

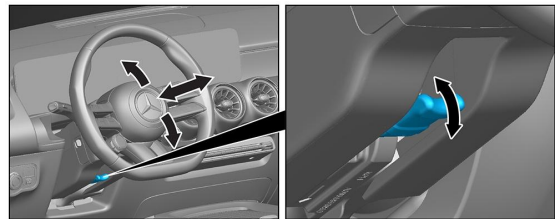
- Remove the cover from the 48-volt battery in the boot.
- Disconnect the negative cable of the 48-volt battery at the screw connection and secure it against unintentional contact.



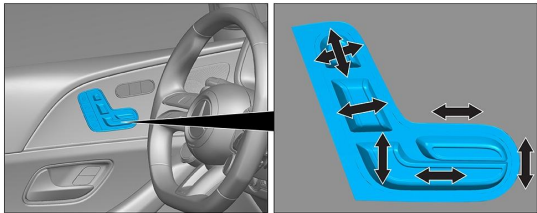
The passive safety systems (airbags and seat belt pretensioners) are deactivated.

### 4. Access to the occupants

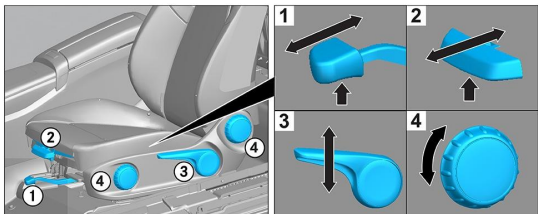
When rescuing the vehicle occupants, the components of the restraint systems (in particular pyrotechnic elements) must be taken into account in accordance with the information on page 1.



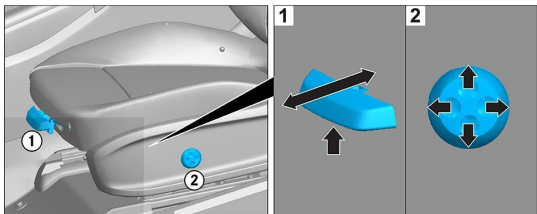
Steering wheel adjustment



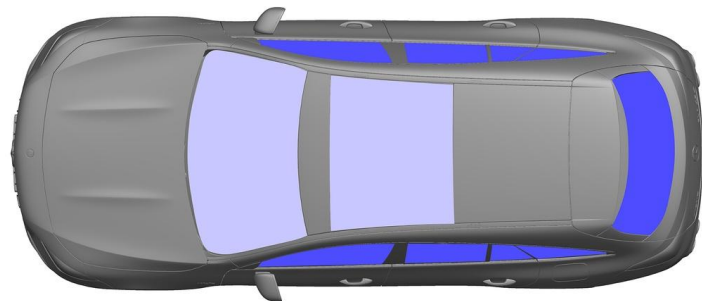
Seat adjustment (electric)



Seat adjustment (mechanical)



Seat adjustment (electric)



- VSG: Laminated safety glass
- ESG: Tempered glass

### 5. Stored energy / liquids / gases / solids

		12 V/ 48 V
		51 L
		530 ± 10 g

### 6. In case of fire



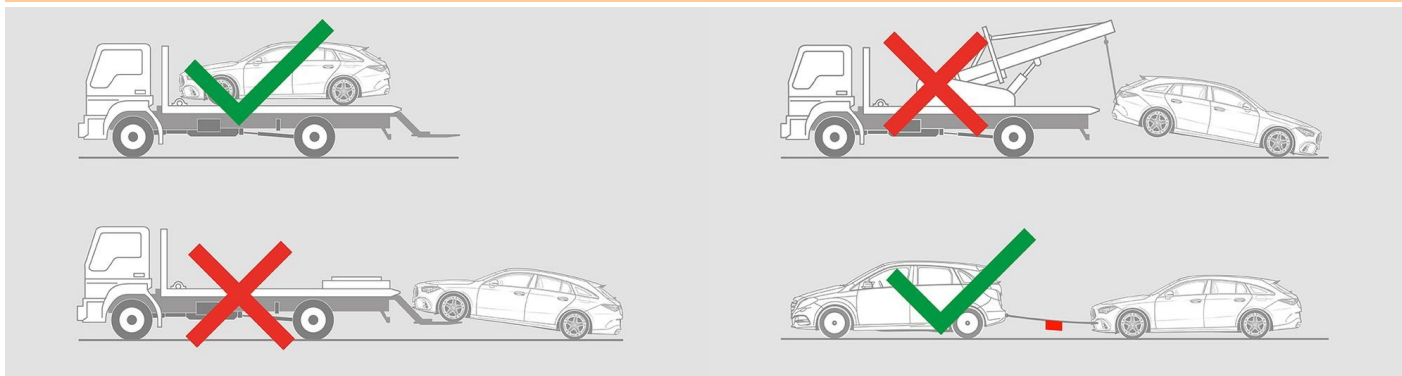
Use large volumes of water (H<sub>2</sub>O) to extinguish a vehicle fire.

### 7. In case of submersion

There is no risk of voltage in the bodywork. After recovery of the vehicle:

- Allow the water to drain out of the interior.
- Commence deactivation of the 12 V/48 V electrical system (see Section 3).

## 8. Towing / transportation / storage



## 9. Important additional information

You can find more information in the [Guidelines for car towing services](#).

## 10. Explanation of pictograms used

	Vehicle on fuel of li- quid group 2		General warning sign		Flammable		Hazardous to the hu- man health
	Corrosives		Acute toxicity		Explosive		Use water to extin- guish the fire
	Use dry foam to extin- guish the fire		Use wet foam to ex- tinguish the fire		Boot		Remove smart key
	Air-conditioning com- ponent		Warning; low temperat- ure				