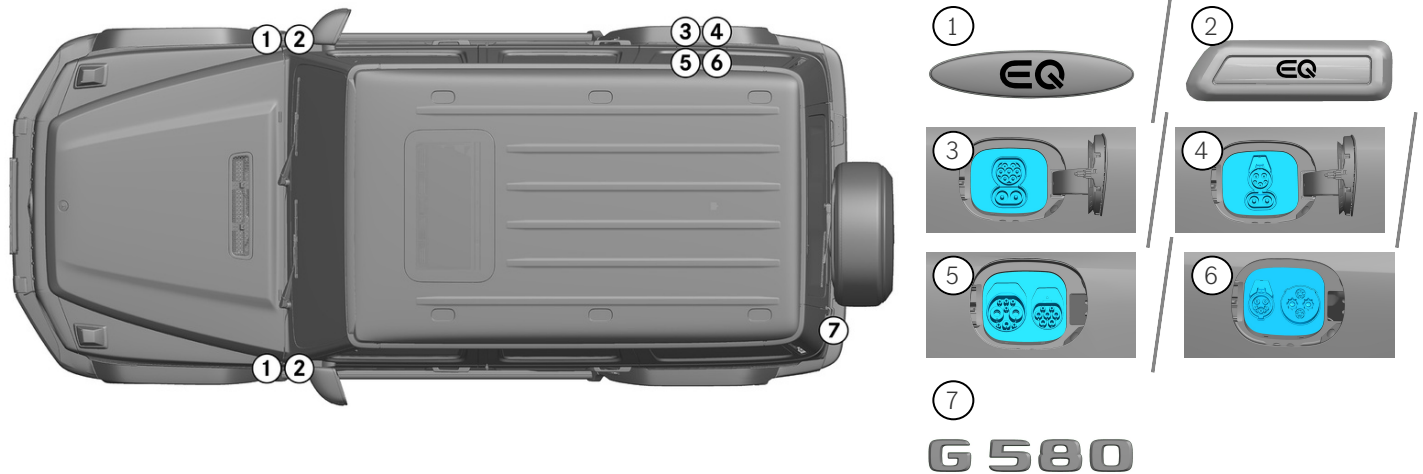


Note: Please see our [emergency response guide](#) for more information

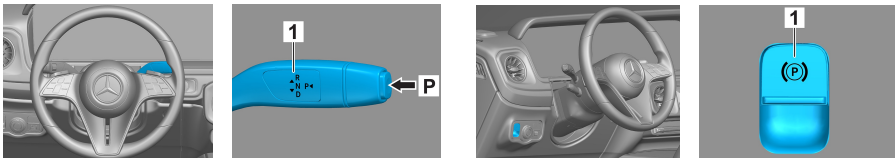


1. Identification / recognition

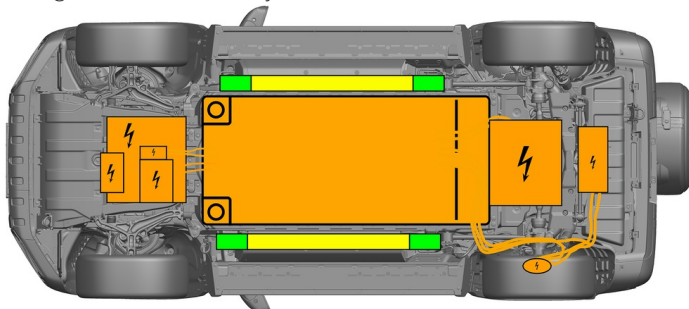


2. Immobilisation / stabilisation / lifting

Parking brake



Press the P switch on the gear selector (1). The parking brake is automatically activated.



- Suitable lifting points
- Suitable stabilisation points on the side
- High-voltage battery

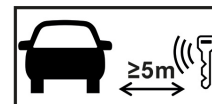


Additional deformation of the door sills and the underbody (e.g. through support with hydraulic equipment) must be avoided during the rescue.

3. Disable direct hazards / safety regulations

Switch off the ignition:

1. Press the START/STOP button without actuating the service brake.
2. Keep the electronic vehicle key at a distance of at least 5 m.



The absence of engine noise does not mean that the vehicle is switched off.



A restart is possible until the vehicle is switched off.

Deactivation of the high-voltage system



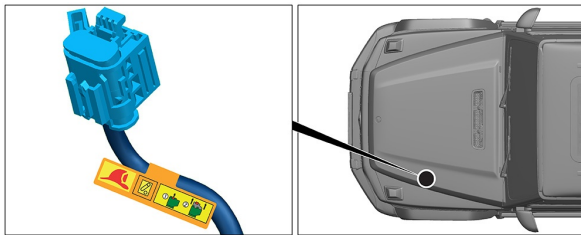
The high-voltage system is automatically switched off in the event of accidents in which the airbags and seat belt pretensioners trigger.



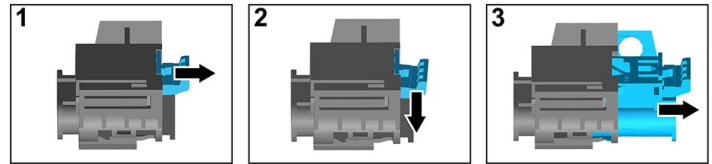


In all other cases, the high-voltage system should be deactivated as follows:

Option 1: High-voltage disconnect



The high-voltage disconnect device is located in the engine compartment on the driver's side.

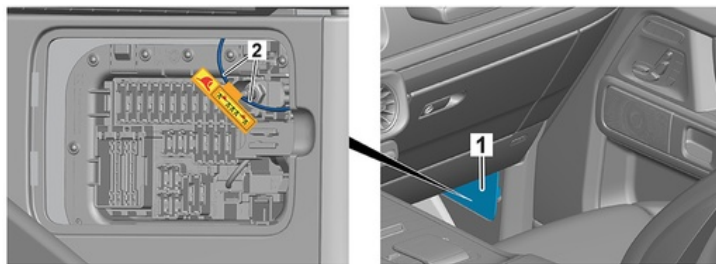


- (1) Pull the release
- (2) Push the release down
- (3) Pull out the switch



Option 2: Alternative high-voltage disconnect

The alternative high-voltage disconnect is located at the base of the A pillar on the passenger side. It is marked with an information label.



Remove the cover (1). Cut the cable at the marked point (2).



In order to ensure that there is no longer any residual voltage in the high-voltage system, wait approx. 20 seconds after switching it off.



The passive safety systems such as airbags and seat belt pretensioners will continue to be supplied with power by the 12-volt electrical system.



Disconnecting the 12 V battery

1. Remove the cover from the 12-volt battery.
2. Disconnect the negative cable of the 12-volt battery at the screw connection and secure it against unintentional contact.



Disconnecting the 12 V battery

1. Remove cover of 12-volt battery in boot. The service cover for this purpose is located in the left side trim.
2. Disconnect the negative cable of the 12-volt battery at the screw connection and secure it against unintentional contact.

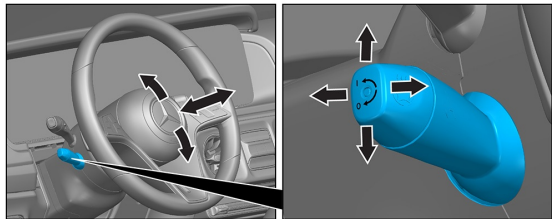


The passive safety systems (airbags and seat belt pretensioners) are deactivated.

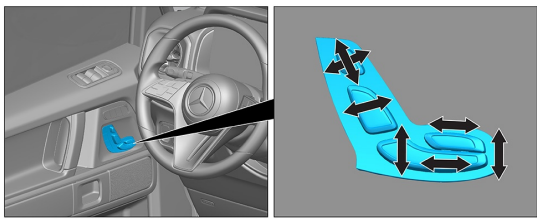


4. Access to the occupants

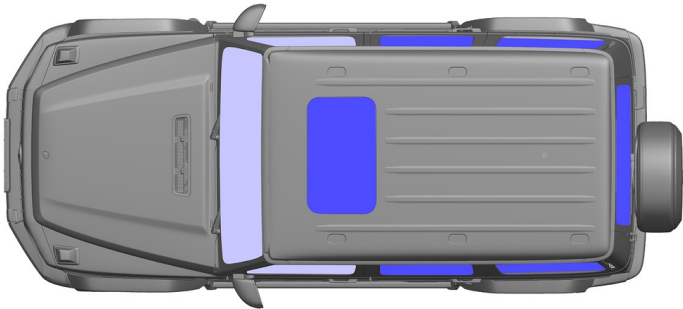
When freeing the occupants, areas of the bodywork which are made from high-strength steels and the components of the restraint systems (in particular pyrotechnic elements) must be taken into consideration in accordance with the information on page 1.



Steering wheel adjustment



Seat adjustment (electric)



VSG: Laminated safety glass
ESG: Tempered glass

5. Stored energy / liquids / gases / solids

		12 V
		400 V
		830 ± 10 g

All high-voltage cables have orange insulation.

6. In case of fire

Use large volumes of water (H₂O) to extinguish a vehicle fire.
Use large volumes of water (H₂O) to cool the Li-ion battery.

Warning: Ignition of the battery possible



If coolant is leaking from the high-voltage battery, it may become unstable owing to thermal overload. Check the battery temperature with an IR thermal imager.



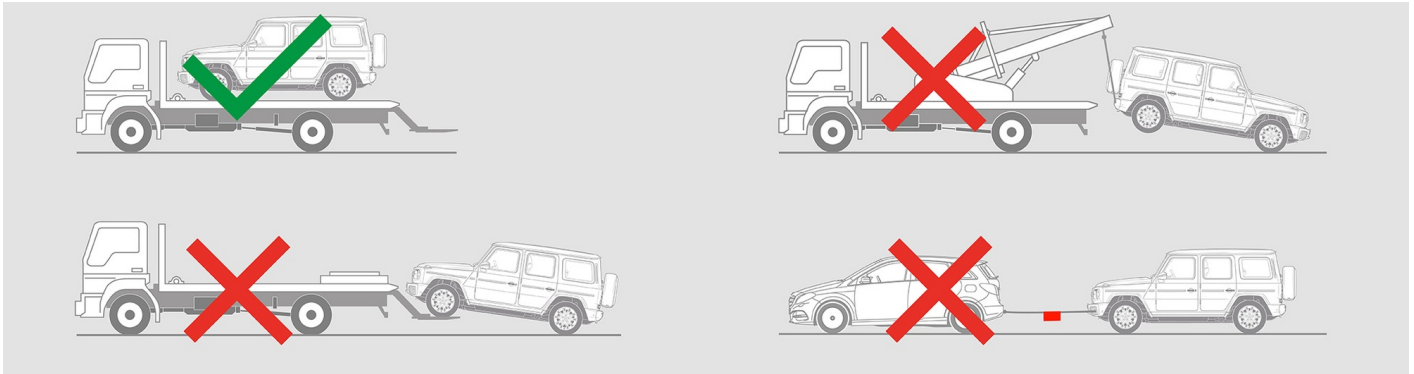
7. In case of submersion

There is no risk of voltage in the bodywork.
After recovery of the vehicle:
1. Allow the water to drain out of the interior.
2. Commence deactivation of the high-voltage system (see Section 3).



8. Towing / transportation / storage

Only transport the vehicle with both axles on a tow truck or car transporter.



Maintain a safe distance from other vehicles.



Warning: Ignition of the battery possible



9. Important additional information

You can find more information in the [Guidelines for car towing services](#).

10. Explanation of pictograms used



Electric Vehicle



General warning sign



Warning, Electricity



Flammable



Hazardous to the human health



Corrosives



Acute toxicity



Explosive



Use water to extinguish the fire



Use thermal Infrared camera



Bonnet



Boot



Remove smart key



Air-conditioning component