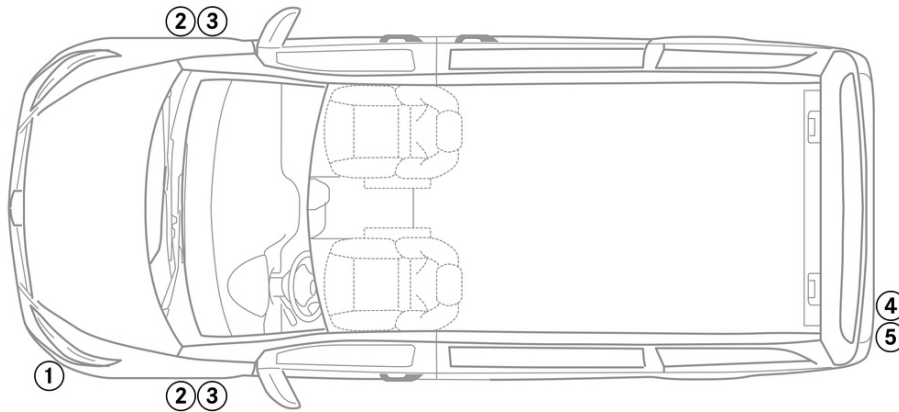


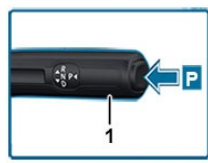


## 1. Identification / recognition

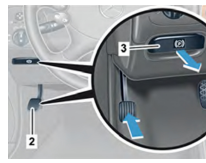


## 2. Immobilisation / stabilisation / lifting

### Parking brake

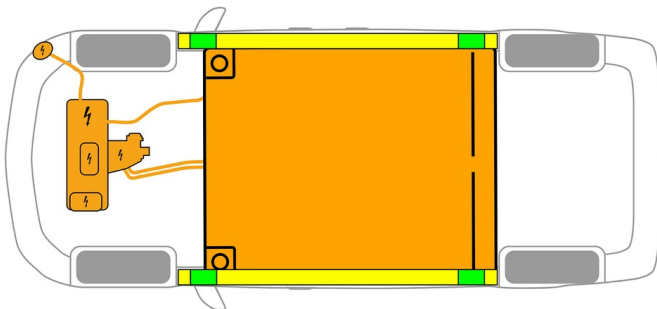




Parking brake – One of the following variants is installed, depending on the vehicle type:



Press the P switch on the gear selector (1). The parking brake is automatically activated.

1. Electric parking brake
2. Parking brake pedal
3. Release the parking brake button
4. Parking brake lever
5. Release the parking brake lever button



-  Suitable lifting points
-  High-voltage battery

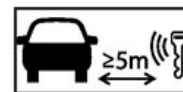


Additional deformation of the door sills and the underbody (e.g. through support with hydraulic equipment) must be avoided during the rescue.

## 3. Disable direct hazards / safety regulations

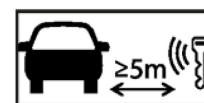
### Switch off the ignition:

1. Press the START/STOP button without actuating the service brake.
2. Keep the electronic vehicle key at a distance of at least 5 m.



### Switch off the ignition:

1. Turn the ignition key anti-clockwise in the ignition lock and remove it from the ignition lock.
2. Remove the ignition key from the vehicle.



The absence of engine noise does not mean that the vehicle is switched off.



A restart is possible until the vehicle is switched off.



## Deactivation of the high-voltage system

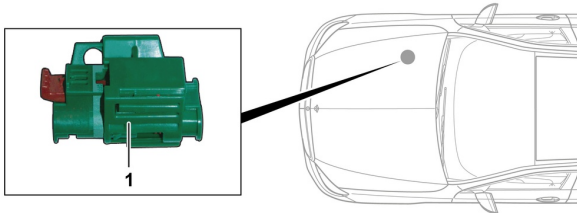


The high-voltage system is automatically switched off in the event of accidents in which the airbags and seat belt pretensioners trigger.

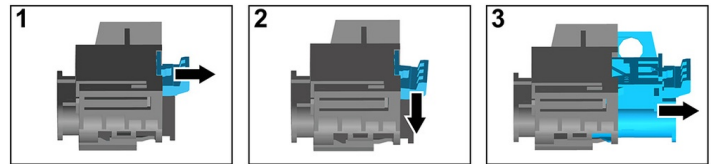


In all other cases, the high-voltage system should be deactivated as follows:

### Option 1: High-voltage disconnect



The high-voltage disconnect is located in the engine compartment on the right side in the direction of travel.



- (1) Pull the release
- (2) Push the release down
- (3) Pull out the switch



### Option 2: Alternative high-voltage disconnect

The alternative high-voltage disconnect is located in the base of the right-hand front seat. It is indicated with a sign.



Remove the cover (1). Cut the cable at the marked point (2).



In order to ensure that there is no longer any residual voltage in the high-voltage system, wait approx. 20 seconds after switching it off.



The passive safety systems such as airbags and seat belt pretensioners will continue to be supplied with power by the 12-volt electrical system.



### Disconnecting the 12 V battery

1. Remove the cover from the 12-volt battery.
2. Disconnect the negative cable of the 12-volt battery at the screw connection and secure it against unintentional contact.

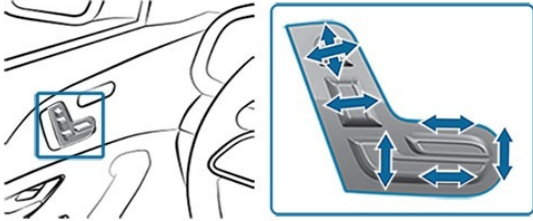


The passive safety systems (airbags and seat belt pretensioners) are deactivated.

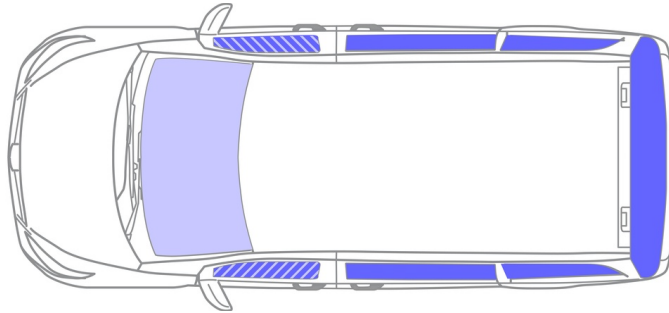


#### 4. Access to the occupants

When freeing the occupants, areas of the bodywork which are made from high-strength steels and the components of the restraint systems (in particular pyrotechnic elements) must be taken into consideration in accordance with the information on page 1.



Seat adjustment (electric)



- VSG: Laminated safety glass
- ESG: Tempered glass
- ESG / VSG

#### 5. Stored energy / liquids / gases / solids



All high-voltage cables have orange insulation.

#### 6. In case of fire



Use large volumes of water (H<sub>2</sub>O) to extinguish a vehicle fire.  
Use large volumes of water (H<sub>2</sub>O) to cool the Li-ion battery.



Warning: Battery re-ignition



If coolant is leaking from the high-voltage battery, it may become unstable owing to thermal overload. Check the battery temperature with an IR thermal imager.



#### 7. In case of submersion

There is no risk of voltage in the bodywork.

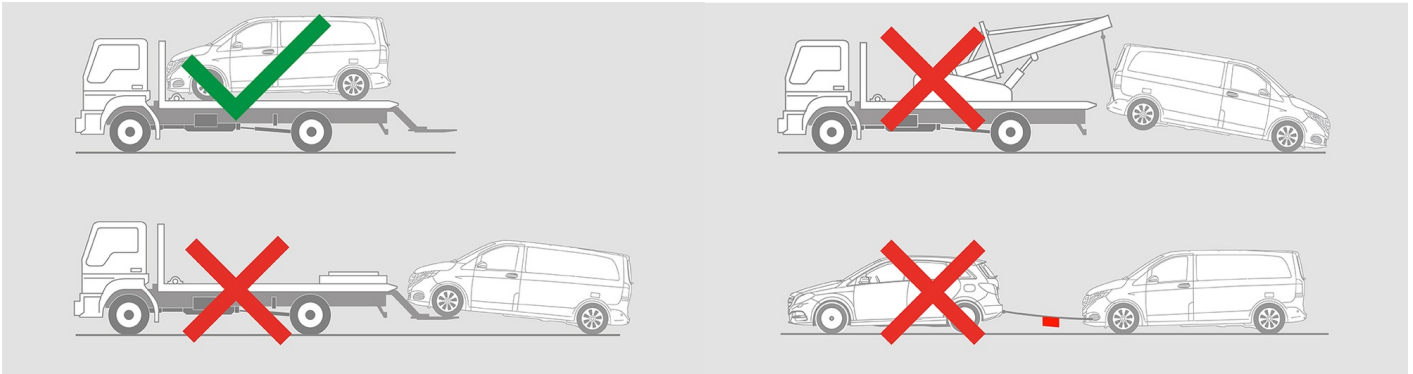
After recovery of the vehicle:

1. Allow the water to drain out of the interior.
2. Commence deactivation of the high-voltage system (see Section 3).



## 8. Towing / transportation / storage

Only transport the vehicle with both axles on a tow truck or car transporter.



Maintain a safe distance from other vehicles.



Warning: Ignition of the battery possible



## 9. Important additional information

You can find more information in the [Guidelines for car towing services](#).

**Note:** Please see our [emergency response guide](#) for more information

## 10. Explanation of pictograms used



Electric Vehicle



General warning sign



Warning, Electricity



Flammable



Hazardous to the human health



Corrosives



Acute toxicity



Use water to extinguish the fire



Use thermal Infrared camera



Bonnet



Remove smart key