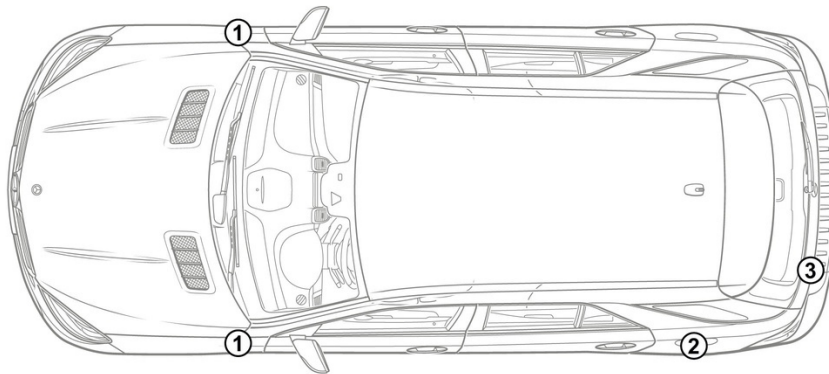


Note: Please see our [emergency response guide](#) for more information



## 1. Identification / recognition



①

EQ POWER



③

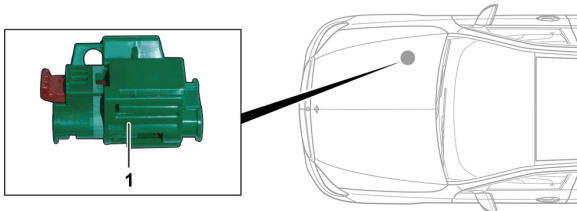
GLE 350de

## 3. Disable direct hazards / safety regulations

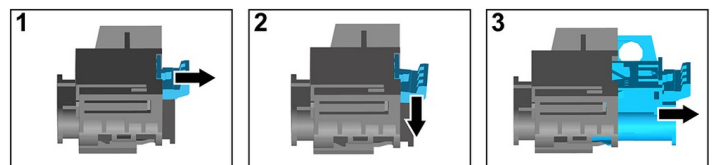
### Deactivation of the high-voltage system

In all other cases, the high-voltage system should be deactivated as follows:

#### Option 1: High-voltage disconnect



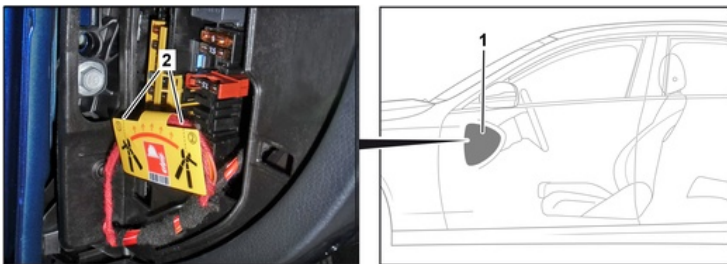
The high-voltage disconnect is located in the engine compartment on the passenger side.



- (1) Pull the release
- (2) Push the release down
- (3) Pull out the switch

#### Option 2: Alternative high-voltage disconnect

The alternative high-voltage disconnect is located under the cover of the fuse box in the cockpit on the driver's side. It is indicated with a sign.



Remove the cover (1). Cut the cable at the marked point (2).



#### Disconnecting the 12 V battery

1. Remove the cover from the 12-volt battery.
2. Disconnect the negative cable of the 12-volt battery at the screw connection and secure it against unintentional contact.